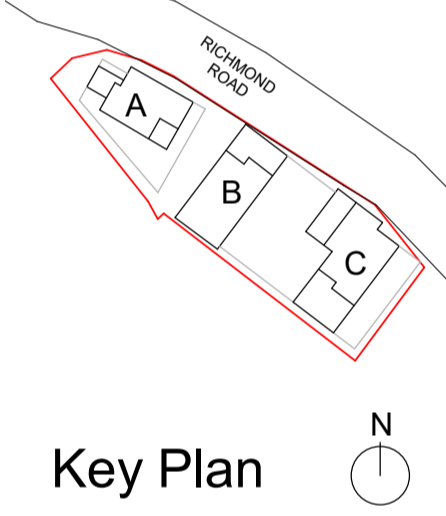
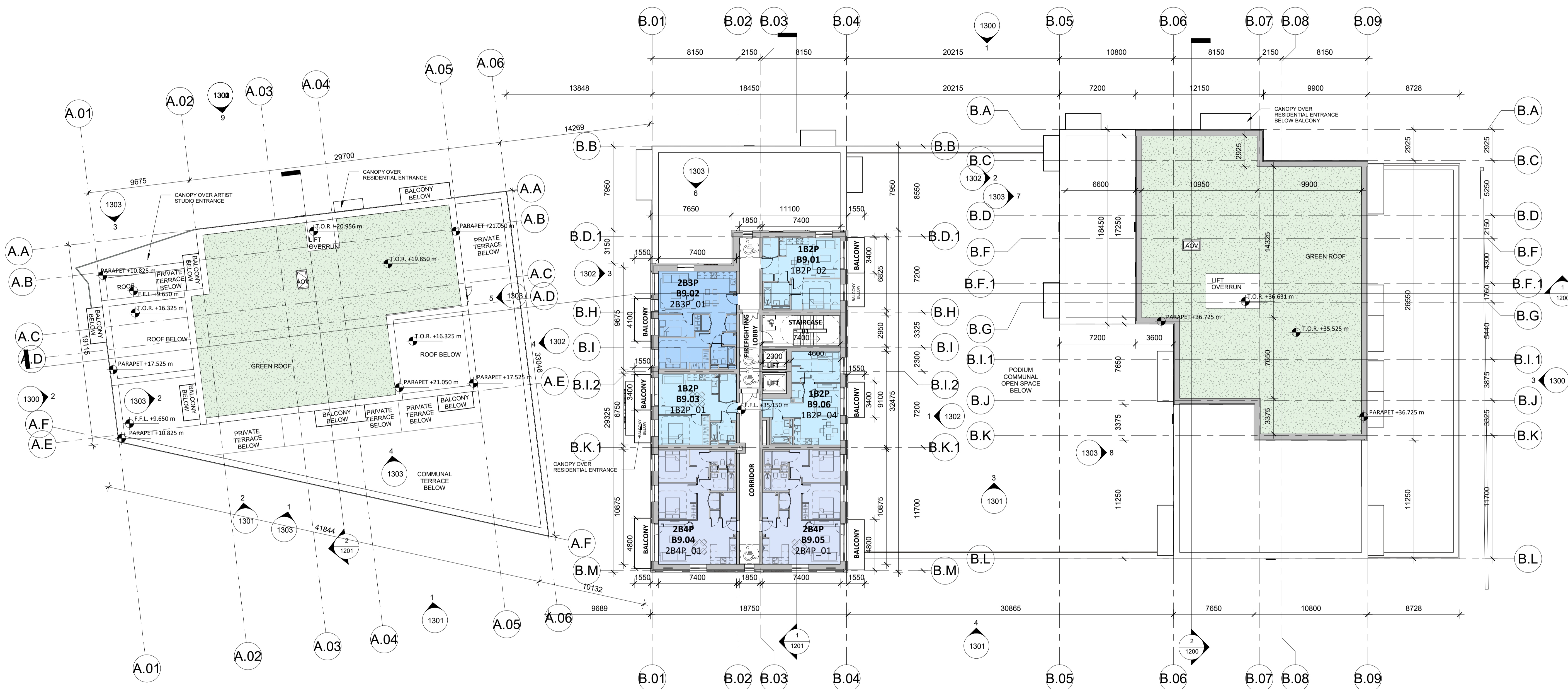


**USES**

- 1B2P Apartment
- 2B3P Apartment
- 2B4P Apartment

NOTE: Refer to drawing series A1500 for detail unit plans, internal room dimensions and areas.



**1 1109\_Ninth Floor Plan - GA**  
1 : 200

Ninth Floor GFA Schedule				
Block	Level	Name	GFA	USE
BLOCK B	Level 09 - Ninth Floor	CIRCULATION	65.9 m2	RESIDENTIAL
BLOCK B	Level 09 - Ninth Floor	CORE	41.0 m2	RESIDENTIAL
BLOCK B	Level 09 - Ninth Floor	RESIDENTIAL	403.3 m2	RESIDENTIAL
TOTAL			510.2 m2	

PS	27/01/2023	ISSUED FOR PLANNING
P4	13/01/2023	ISSUED FOR PRE-PLANNING
P3	08/10/2022	ISSUED FOR PRE-PLANNING
P2	09/09/2022	ISSUED FOR PRE-PLANNING
P1	25/08/2022	ISSUED FOR PRE-PLANNING
Rev.	Date	Description
<b>MALKEY LIMITED</b>		
STATUS: <b>PLANNING</b>		
PROJECT: 158A RICHMOND ROAD		
PROJECT ADDRESS: 158A RICHMOND ROAD DUBLIN 3		
DWG TITLE: NINTH FLOOR PLAN - GENERAL ARRANGEMENT		
DWG NO.: 22001-RKD-ZZ-09-DR-A-1109		
REV.	STATUS	PROJECT NO.
P5	A3	22001
DATE	JAN 2023	SCALE
		1 : 200
	DRN LM	CHK HB