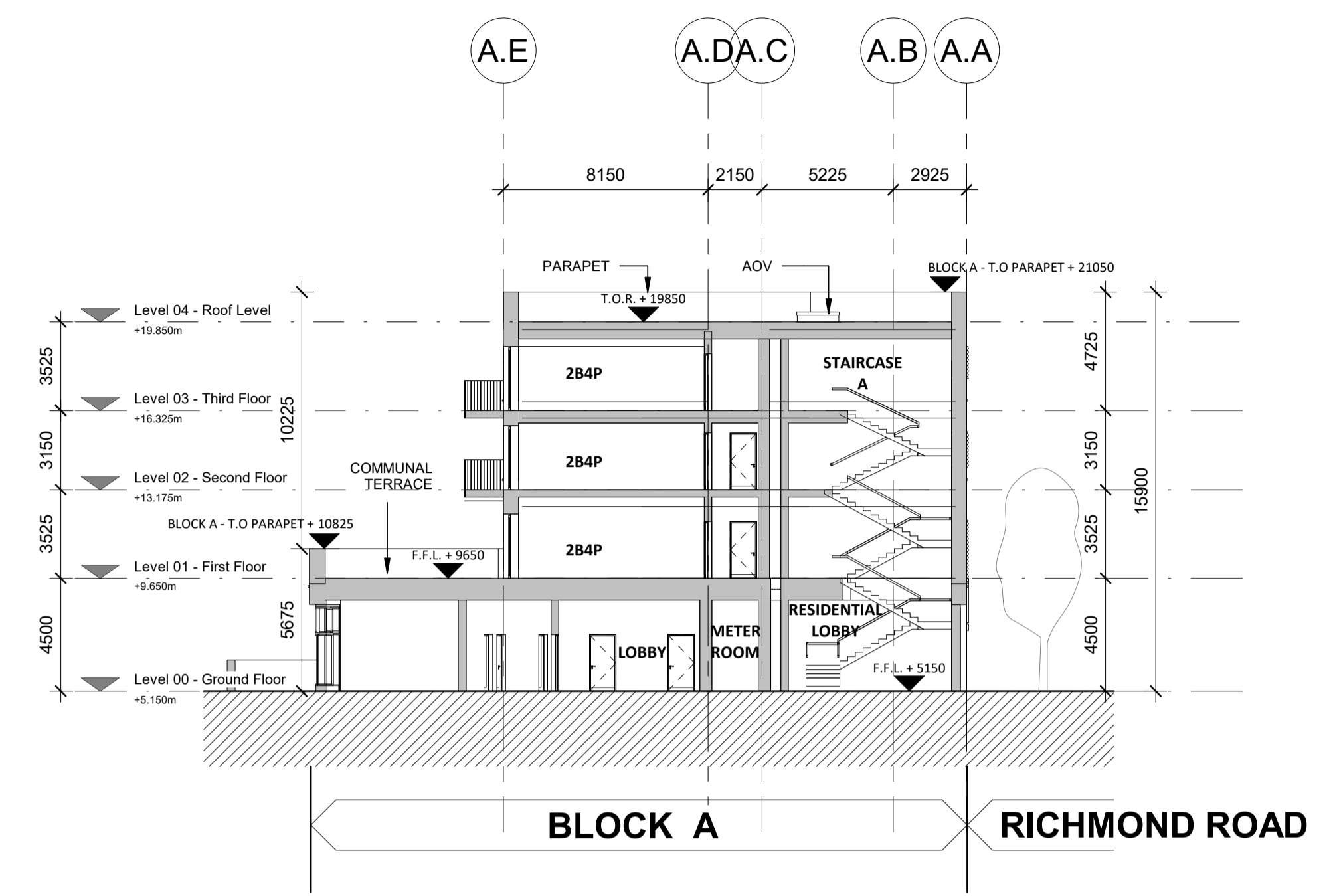
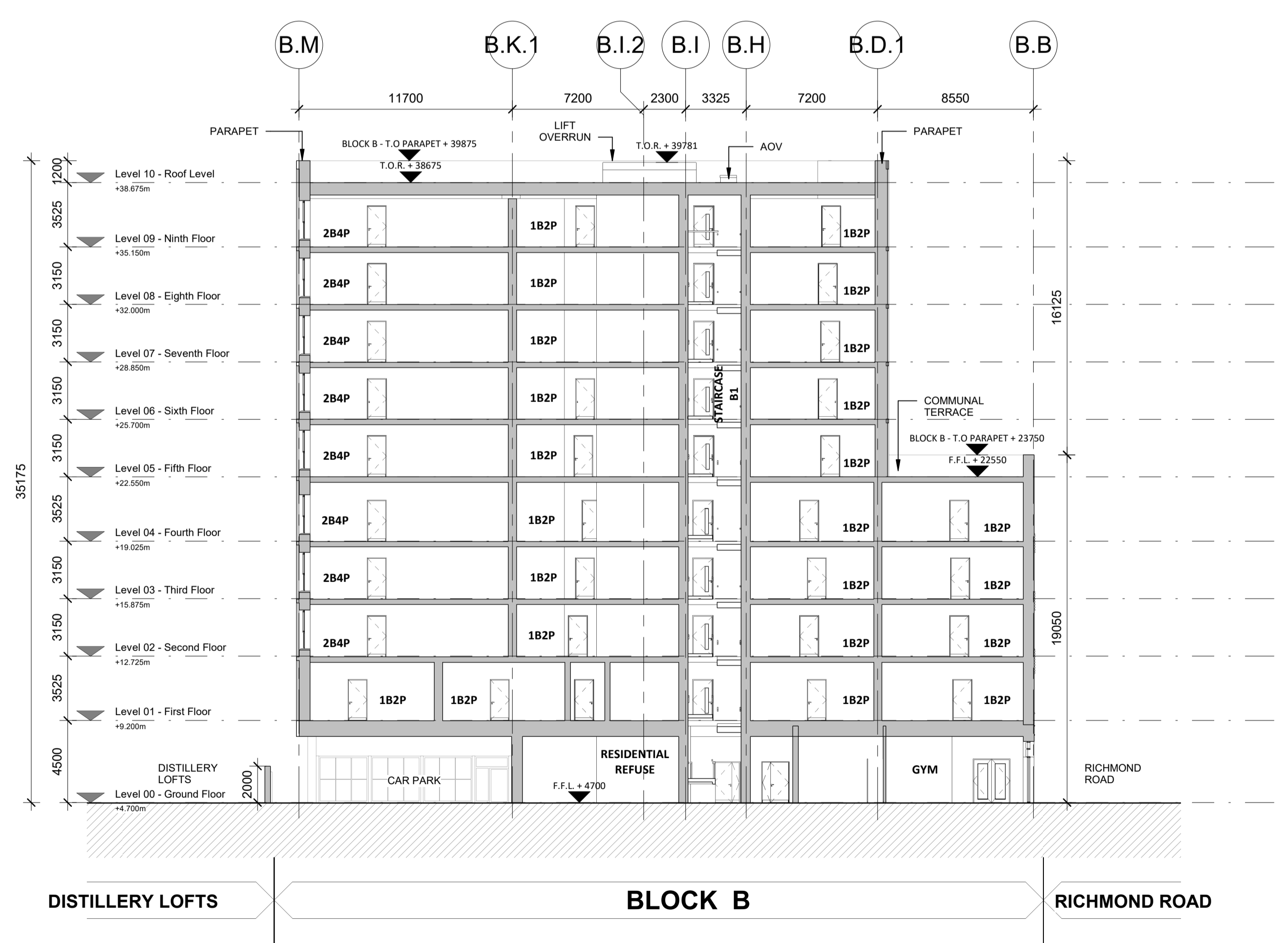


Copyright and ownership of this drawing is vested in RKD Architects, whose prior written consent is required for its use, reproduction or for publication to any third party. All rights reserved by the law of copyright and by international copyright conventions are reserved to RKD Architects and may be protected by court proceedings for damages and/or injunctions and costs.
RKD Architects' Quality Management Systems are certified to ISO 9001:2015.

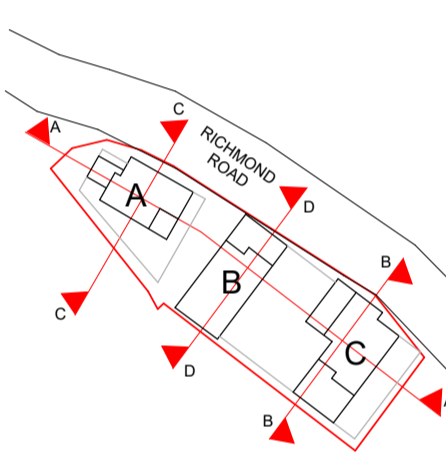
NOTE: Refer to drawing series A1500 for detail unit plans, internal room dimensions and areas.



2 1201 Section C-C
1 : 200



1 1201 Section D-D
1 : 200



Key Plan

| Rev. | Date | Description |
|------|------------|-------------------------|
| P5 | 27/01/2023 | ISSUED FOR PLANNING |
| P4 | 13/01/2023 | ISSUED FOR PRE-PLANNING |
| P3 | 08/10/2022 | ISSUED FOR PRE-PLANNING |
| P2 | 09/09/2022 | ISSUED FOR PRE-PLANNING |
| P1 | 25/08/2022 | ISSUED FOR PRE-PLANNING |

MALKEY LIMITED

STATUS **PLANNING**

PROJECT **158A RICHMOND ROAD**

PROJECT ADDRESS **158A RICHMOND ROAD DUBLIN 3**

DWG TITLE **GA SECTIONS - SHEET 2 OF 2**

DWG NO. **22001-RKD-ZZ-ZZ-DR-A-1201**

| REV. | STATUS | PROJECT NO. | SCALE |
|------|--------|-------------|---------|
| P5 | A3 | 22001 | 1 : 200 |

DATE **JAN 2023** DRN **JB** CHK **HB**

